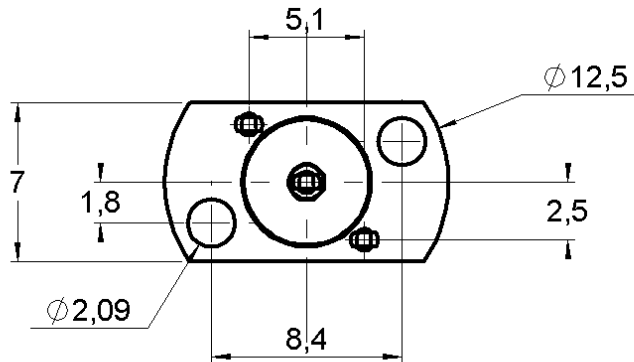


STRAIGHT PLUG RECEPTACLE FOR PCB

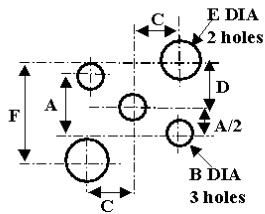
R214.416.740

PRESS-FIT LEGS - COND 100

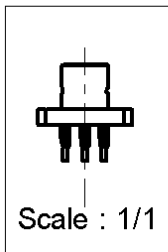
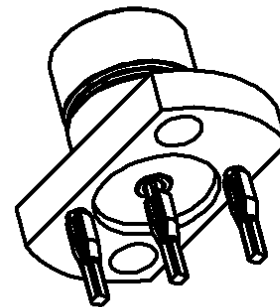
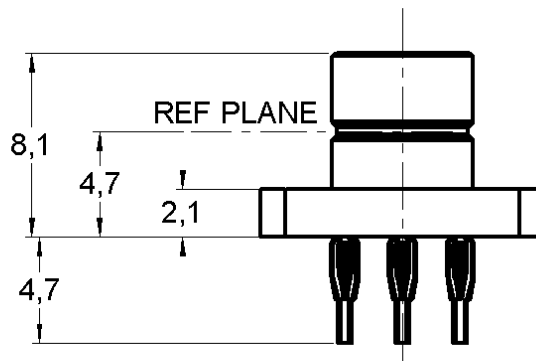
Series : SMZ (BT43)



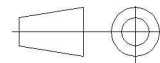
PANEL CUT OUT



	mm	
	Maxi	mini
A	5.105	5.055
B	1.09	0.94
C	1.85	1.75
D	4.25	4.15
E	2.8	2.7
F	8.45	8.35



All dimensions are in mm.



COMPONENTS	MATERIALS	PLATING (µm)
BODY	BRASS	GOLD 0.2 OVER NICKEL 2
CENTER CONTACT	BRASS	GOLD 1.3 OVER NICKEL 2
OUTER CONTACT	-	-
INSULATOR	PTFE	-
GASKET	-	-
OTHERS PARTS	Cu Sn 8 Hardness 160<HV<190	TIN 3 OVER NICKEL 2
-	-	-
-	-	-

Issue : 0540 B

In the effort to improve our products, we reserve the right to make changes judged to be necessary.



STRAIGHT PLUG RECEPTACLE FOR PCB

R214.416.740

PRESS-FIT LEGS - COND 100

Series : SMZ (BT43)

PACKAGING

SPECIFICATION

Standard	Unit	Other
100	'W' option	Contact us

ELECTRICAL CHARACTERISTICS

ENVIRONMENTAL

Impedance		75 Ω
Frequency		0-2.4 GHz
VSWR	NA +	0.000 x F(GHz) Maxi
Insertion loss		NA √F(GHz) dB Maxi
RF leakage	- (60 - F(GHz)) dB Maxi
Voltage rating		500 Veff Maxi
Dielectric withstanding voltage		1500 Veff mini
Insulation resistance		1000 MΩ mini

Operating temperature	-40/+100 ° C
Hermetic seal	NA Atm.cm3/s
Panel leakage	NA

OTHER CHARACTERISTICS

Assembly instruction **NA**

Others :
-

MECHANICAL CHARACTERISTICS

Center contact retention		
Axial force – Mating end	22	N mini
Axial force – Opposite end	22	N mini
Torque	NA	N.cm mini
Recommended torque		
Mating	NA	N.cm
Panel nut	NA	N.cm
Mating life	250	Cycles mini
Weight	1.550	g

Issue : 0540 B

In the effort to improve our products, we reserve the right to make changes judged to be necessary.



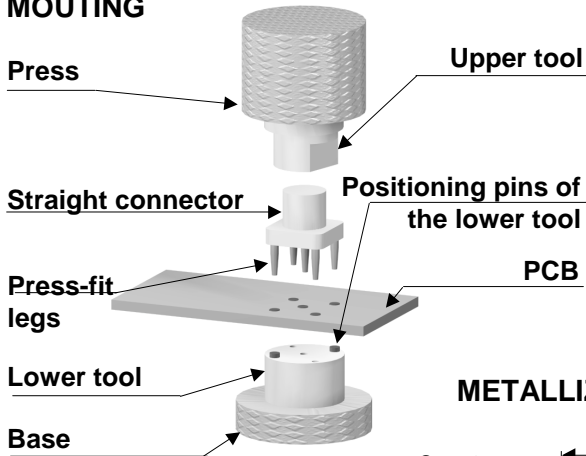
STRAIGHT PLUG RECEPTACLE FOR PCB

R214.416.740

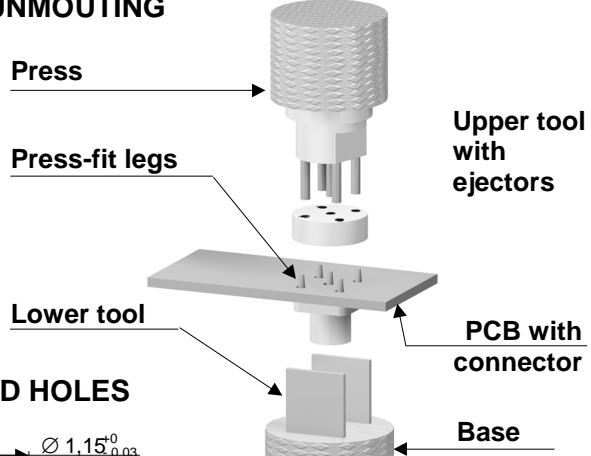
PRESS-FIT LEGS - COND 100

Series : SMZ (BT43)

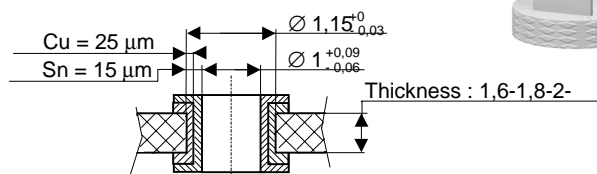
MOUNTING



UNMOUNTING

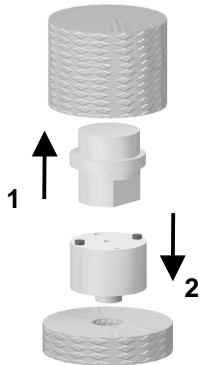


METALLIZED HOLES



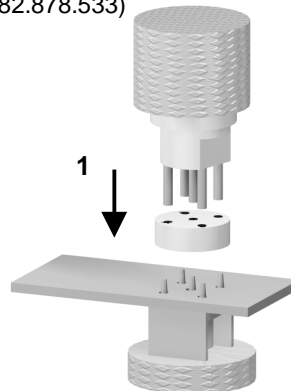
1

Slide the upper tool (R282.878.190) into the machine (press).
Slide the lower tool (R282.878.523) into the base.



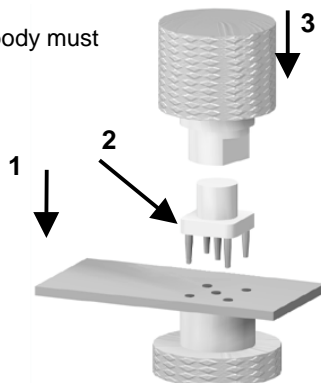
1

Place correctly the PCB and the connector on the lower tool.(R282.878.533)



2

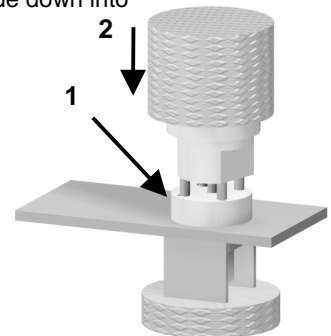
Place correctly the PCB on the lower tool.
Introduce the press-fit legs into the holes of the PCB.
Push on top (100N mini per press-fit leg) until total insertion.
Note: the connector body must rest on the PCB.



2

Place the upper tool (R282.878.513) at the back of the connector and place correctly the ejectors :
- on the press-fit legs (if their length exceed the PCB thickness)
- in the holes of the PCB (if not).
Press the upper tool (100N mini per press-fit leg) to remove the connector until it slide down into the lower tool.

CAUTION :
A plated hole of the PCB can be used up to 3 times.



Issue : 0540 B

In the effort to improve our products, we reserve the right to make changes judged to be necessary.

